



FOR LEASE

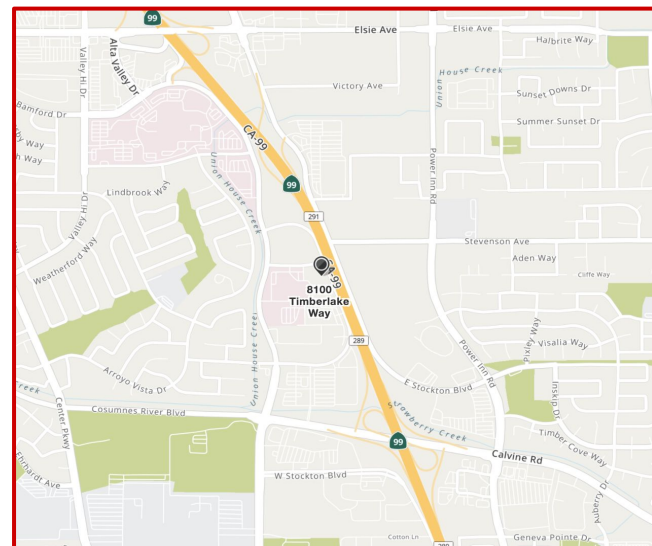
8100 Timberlake Way
Sacramento, CA 95823

Flexible & Affordable Medical Space



PROPERTY HIGHLIGHTS

- Flexible & affordable medical office space
- +/- 2,372 RSF available
- Lease rate \$1.95 RSF
- Monument signage offers enhanced tenant identity
- Excellent location in the heart of South Sacramento's medical district
- Adjacent to Methodist Hospital and less than a mile from Kaiser Permanente
- Convenient freeway access and visibility from Highway 99



Please do not disturb tenants. For more information or to arrange a tour, contact the listing agents:

GRETCHEN TOBIN
 Cell: 916.425.7711
gretchentobin@kw.com
 DRE License # 00937965

DAN WATSON
 Cell: 831.227.7098
dan.watson@kw.com
 DRE License #01786748

www.bobkuhl.com

BOB KUHL
 Cell: 916.947.5060
bob@bobkuhl.com
 DRE License # 00606862

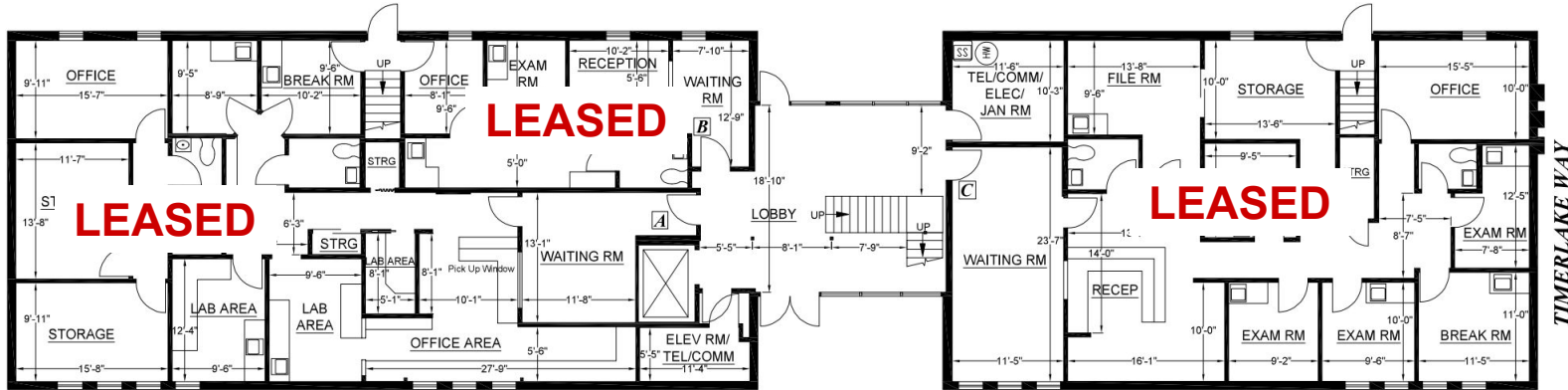
KW Commercial | 548 Gibson Drive, Ste 200 | Roseville, CA 95678 | 916.788.8800 | License #1272617

The information contained herein was obtained from third parties, and it has not been independently verified by the real estate brokers. Buyers/tenants should have the experts of their choice inspect the property and information. Real estate brokers are not qualified to act as or select experts with respect to legal, tax, environmental, building construction, soils-drainage or other such matters.



8100 Timberlake Way
Sacramento, CA

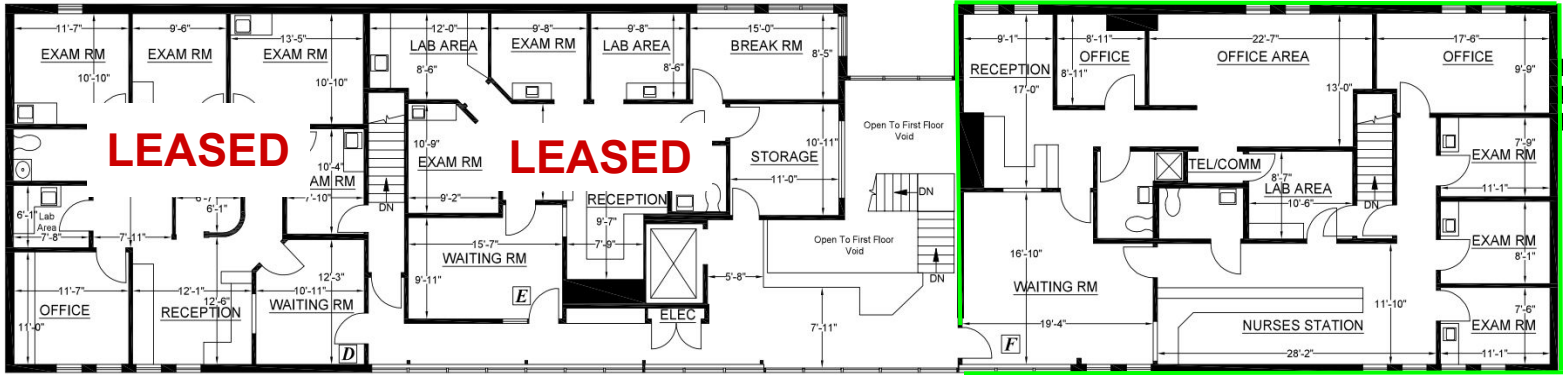
First Floor



Second Floor

SUITE D

SUITE F



	Suite F
RSF	+/- 2,372 RSF
Price	\$1.95/RSF
Availability	Available

For more information,
please contact:

GRETCHEN TOBIN
Cell: 916.425.7711
gretchentobin@kw.com
DRE # 00937965

DAN WATSON
Cell: 831.227.7098
dan.watson@kw.com
DRE #01786748

BOB KUHL
Cell: 916.947.5060
bob@bobkuhl.com
DRE # 00606862

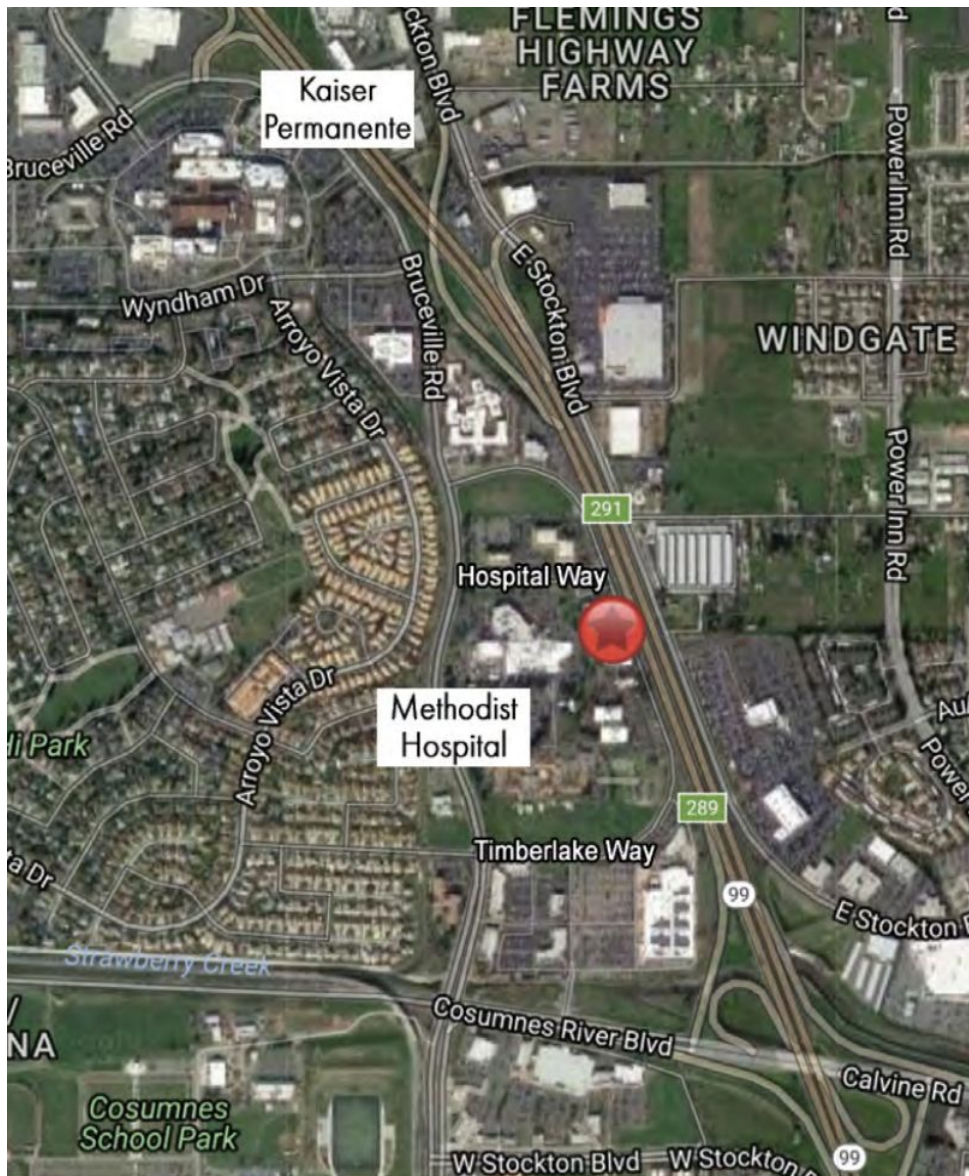
www.bobkuhl.com

KW Commercial | 548 Gibson Drive, Ste 200 | Roseville, CA 95678 | 916.788.8800 | License #1272617

The information contained herein was obtained from third parties, and it has not been independently verified by the real estate brokers. Buyers/tenants should have the experts of their choice inspect the property and information. Real estate brokers are not qualified to act as or select experts with respect to legal, tax, environmental, building construction, soils-drainage or other such matters.



**8100 Timberlake Way
Sacramento, CA**



For more information, please contact:

GRETCHEN TOBIN

Cell: 916.425.7711

gretchentobin@kw.com

DRE License # 00937965

DAN WATSON

Cell: 831.227.7098

dan.watson@kw.com

DRE License #01786748

BOB KUHL

Cell: 916.947.5060

bob@bobkuhl.com

DRE License # 00606862

www.bobkuhl.com

KW Commercial | 548 Gibson Drive, Ste 200 | Roseville, CA 95678 | 916.788.8800 | License #1272617

The information contained herein was obtained from third parties, and it has not been independently verified by the real estate brokers. Buyers/tenants should have the experts of their choice inspect the property and information. Real estate brokers are not qualified to act as or select experts with respect to legal, tax, environmental, building construction, soils-drainage or other such matters.

PROPERTY PHOTOS

8100 Timberlake Way
Sacramento, CA



*For more information or to arrange a tour,
contact the listing agents:*

GRETCHEN TOBIN

Cell: 916.425.7711

gretchentobin@kw.com

DRE License # 00937965

DAN WATSON

Cell: 831.227.7098

dan.watson@kw.com

DRE License #01786748

BOB KUHL

Cell: 916.947.5060

bob@bobkuhl.com

DRE License # 00606862

www.bobkuhl.com



KW Commercial | 548 Gibson Drive, Ste 200 | Roseville, CA 95678 | 916.788.8800 | License #1272617

The information contained herein was obtained from third parties, and it has not been independently verified by the real estate brokers. Buyers/tenants should have the experts of their choice inspect the property and information. Real estate brokers are not qualified to act as or select experts with respect to legal, tax, environmental, building construction, soils-drainage or other such matters.